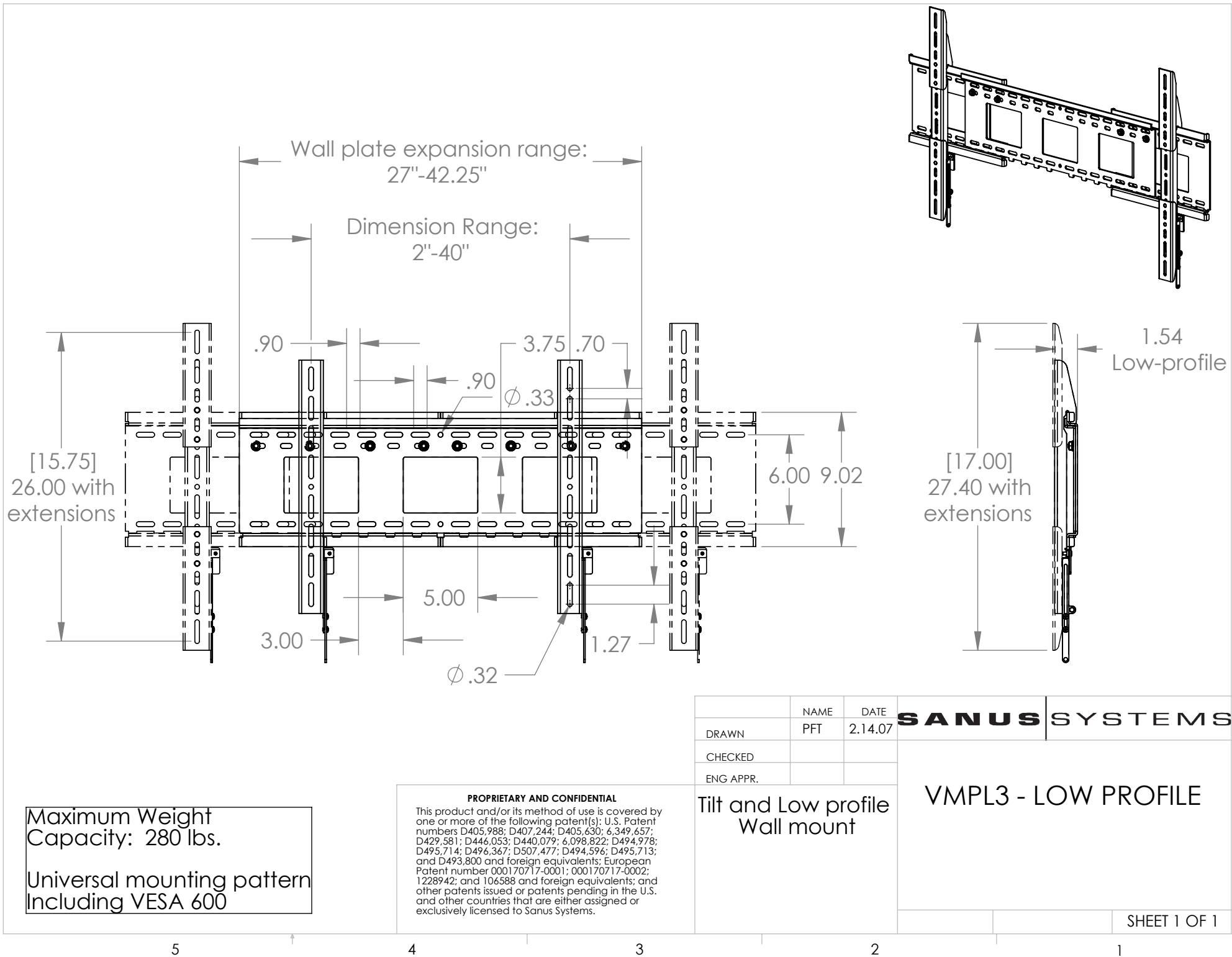


Maximum Weight Capacity: 280 lbs.
 Universal mounting pattern Including VESA 600

PROPRIETARY AND CONFIDENTIAL
 This product and/or its method of use is covered by one or more of the following patent(s): U.S. Patent numbers D405,988; D407,244; D405,630; 6,349,657; D429,581; D446,053; D440,079; 6,098,822; D494,978; D495,714; D496,367; D507,477; D494,596; D495,713; and D493,800 and foreign equivalents; European Patent number 000170717-0001; 000170717-0002; 1228942; and 106588 and foreign equivalents; and other patents issued or patents pending in the U.S. and other countries that are either assigned or exclusively licensed to Sanus Systems.

| | | | |
|-----------|------|---------|--------------------------------------|
| | NAME | DATE | SANUS SYSTEMS |
| DRAWN | PFT | 2.14.07 | |
| CHECKED | | | VMPL3 - TILTING Wall mount |
| ENG APPR. | | | |
| | | | SHEET 1 OF 1 |



[15.75]
26.00 with
extensions

Wall plate expansion range:
27"-42.25"

Dimension Range:
2"-40"

1.54
Low-profile

[17.00]
27.40 with
extensions

Maximum Weight
Capacity: 280 lbs.

Universal mounting pattern
Including VESA 600

PROPRIETARY AND CONFIDENTIAL
This product and/or its method of use is covered by one or more of the following patent(s): U.S. Patent numbers D405,988; D407,244; D405,630; 6,349,657; D429,581; D446,053; D440,079; 6,098,822; D494,978; D495,714; D496,367; D507,477; D494,596; D495,713; and D493,800 and foreign equivalents; European Patent number 000170717-0001; 000170717-0002; 1228942; and 106588 and foreign equivalents; and other patents issued or patents pending in the U.S. and other countries that are either assigned or exclusively licensed to Sanus Systems.

| | NAME | DATE | SANUS SYSTEMS |
|------------------------------------|------|---------|----------------------|
| DRAWN | PFT | 2.14.07 | |
| CHECKED | | | VMPL3 - LOW PROFILE |
| ENG APPR. | | | |
| Tilt and Low profile Wall mount | | | SHEET 1 OF 1 |